

Outdoor Motor Operated Sun Shade with Valance

Installation and Care Instructions

(Installation video available at www.koolspot.net)

CUSTOMER SERVICE

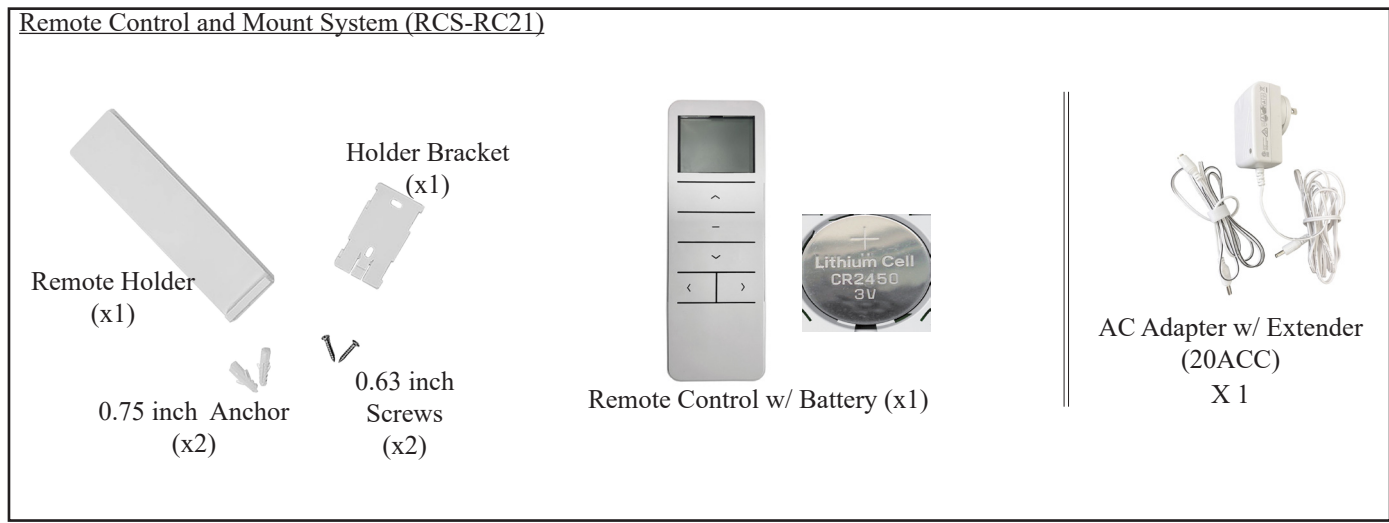
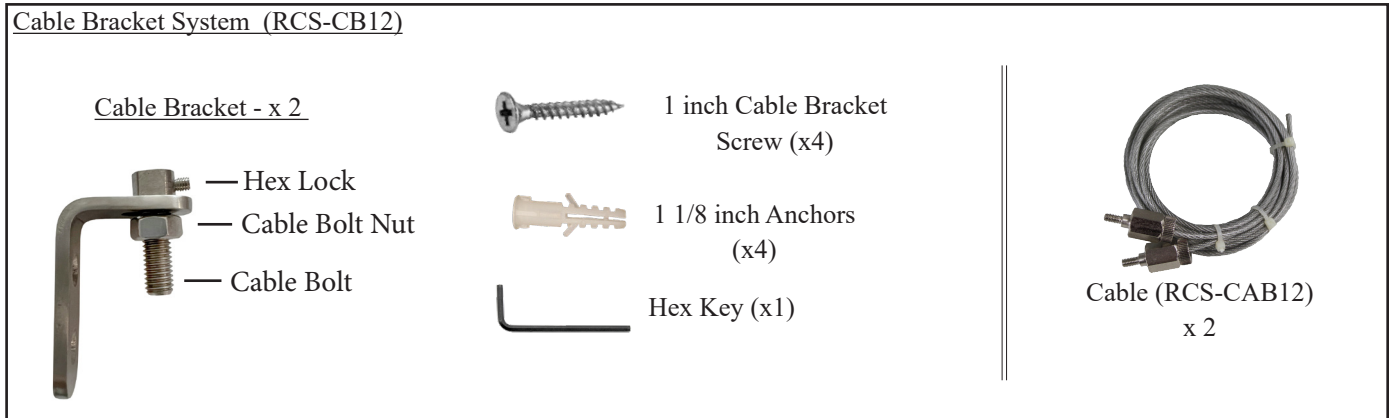
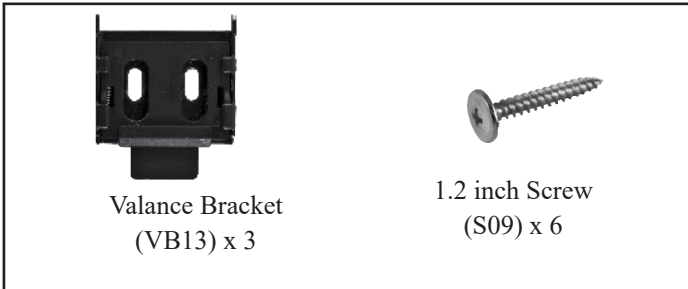
Contact us at 303.652.6164 for additional information. English speaking customer service representatives are available Monday through Friday, from 7am - 4pm (MST). Please visit www.koolspot.net to register your shade purchase.

IMPORTANT INFORMATION

We recommend two (2) people install this shade. Retain these instructions for future use. A power drill, tape measure, leveling device, and Phillips screwdriver bit are recommended for installation (not included). Note: this shade must be installed into wood studs. If wood studs are not available, anchoring hardware must be used (not included). **IMPORTANT: only plug-in your shade when the battery needs to be charged. Over-charging the battery will shorten the life of the battery.**

Tools required: phillips screwdriver, leveling device (laser level, standard level, etc.), and power drill (if pre-drilling the holes). Note: your parts and fabric may differ in color than shown in this manual. Parts shown are not to scale. Pre-installed parts are not shown in the part list below.

HARDWARE BOX CONTENTS



BEFORE YOU GET STARTED....A COUPLE TIPS

IMPORTANT

- Your shade has an antenna (Fig A) that allows the Remote to communicate with the motor. Please do not cut the antenna.
- If you purchased multiple shades, we recommend you label each remote so you know which shade it belongs to (for example: Shade 1, Remote 1, Shade 2, Remote 2, etc).
- Make sure your shade is fully charged (see step 5)

Step 1: Remove Protective Film from Valance

Your shade is shipped with a protective film to prevent scratching during shipping. Please remove this film prior to installation.



Fig A

Step 2: Determine Your Installation Type

Determine your type of installation. Your shade can be hung from a wall (Fig B) or a ceiling (Fig C).

Wall Installation

Step 3: Install Valance Brackets (read entire step before install)

Your shade includes three (3) Valance Brackets, you must install at least two (2) of them. Install one (1) Valance Bracket near each end of the shade. Note: the Valance Brackets cannot be installed on the extreme edges of the shade, you will need to allow at least 2 inches (5 cm) at the ends of each side. We recommend installing the Valance Brackets on the closest stud to each end of the shade, remembering to allow at least 2 inches (5 cm) from each end. If wood studs are not available, you will need to use anchors (not included).



Fig B

If you are installing the third Valance Bracket (recommended), we suggest installing it on a wood stud near the center of the shade. It needs to be aligned with the two (2) end Valance Brackets. If wood studs are not available, you will need to use anchors (not included). Visit your local hardware store for more information.

Ceiling Installation

Your shade includes a paper template to help align your pilot holes. Use of the template is optional, but recommended. To use the template, temporarily adhere to your surface. Make sure the template is flat, level and unwrinkled before adhering it to your surface. Remove the template before you install your Valance Brackets.



Fig C

Important note: your shade will not install correctly unless your Valance Brackets are perfectly aligned with each other. We recommend using a laser level (not included) to align the screw holes.

WALL INSTALLATION

For wall installations, if there is a ceiling that overhangs the shade, you need to allow at least 1 inch (2.54 cm) of clearance above the Valance Bracket to allow the Valance to hook onto the Valance Bracket. See Figure D.



Fig D

Make sure the plastic tabs on your Valance Brackets are pointing towards the ground (Fig E). Use the 1.2 inch Valance Bracket screws to install your Valance Brackets.

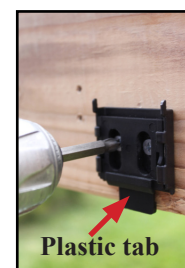


Fig E

CEILING INSTALLATION

For ceiling installations, if there is a wall behind the shade, you need to allow at least 1 inch (2.54 cm) of clearance behind the Valance Bracket to allow the Valance to hook onto the Valance Bracket. See Figure F.



Fig F

Make sure the plastic tabs on your Valance Brackets are pointing out, towards you (Fig G). Use the 1.2 inch screws to install your Valance Brackets.

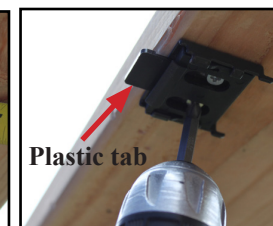


Fig G

It is very important that all brackets are perfectly aligned with each other.

Step 4: Install the Shade

WALL INSTALLATION

For wall installations, hook the back of the Valance on the top of the Valance Brackets (Fig H), then rotate the shade down and click into place (Fig I).

Note: you may need to push the plastic tabs on the Valance Brackets to help the shade click into place.



Fig H

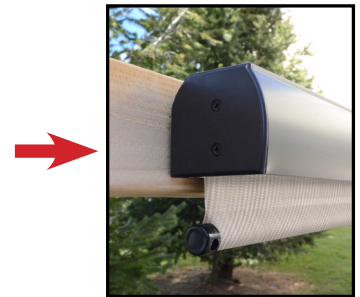


Fig I

CEILING INSTALLATION

For ceiling installations, hook the back of the Valance on the back of the Valance Brackets (Fig J), then rotate the Valance upwards and click it into place (Fig K).

Note: you may need to push the plastic tabs on the Valance Brackets to help the shade click into place.



Fig J

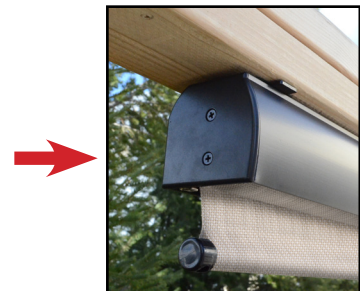


Fig K

Step 5: Make sure your shade is charged

Check to make sure your shade is fully charged. The AC adapter button will be green if your shade has a full charge. If adapter button is red, charge your shade before installing. To charge your shade, connect it to a standard 110V electrical outlet using the included AC adapter. An optional extender has been included to extend the length of the charging adapter. If you want to use this extender simply plug it into the AC adapter and then plug the AC adapter into a standard 110V electrical outlet. The battery will fully charge in approximately 6-8 hours. The AC adapter indicator light will turn green when shade is fully charged. If the indicator light is red, the shade battery is charging.

Your AC adapter is not water resistant and should not be left outside during inclement weather. **IMPORTANT: only plug-in your shade when the battery needs to be charged. Over-charging the battery will shorten the life of the battery.**

Step 6: Install Battery in Remote Control

Your Remote Control requires a CR2450 (3V) button cell lithium battery (pre-installed). To activate the Battery, remove the battery insulator by pulling on the plastic tab (Fig L).

Your Remote Control has five (5) buttons, Up, Down, Stop, channel increase and channel decrease (Fig M).

WARNING: This product contains a Button or Coin Cell Battery. A swallowed Button or Coin Cell Battery can cause internal chemical burns in as little as two hours and lead to death. Dispose of used batteries immediately. Keep new and used batteries away from children. If you think batteries might have been swallowed or placed inside any part of the body, seek immediate medical attention.



Fig L

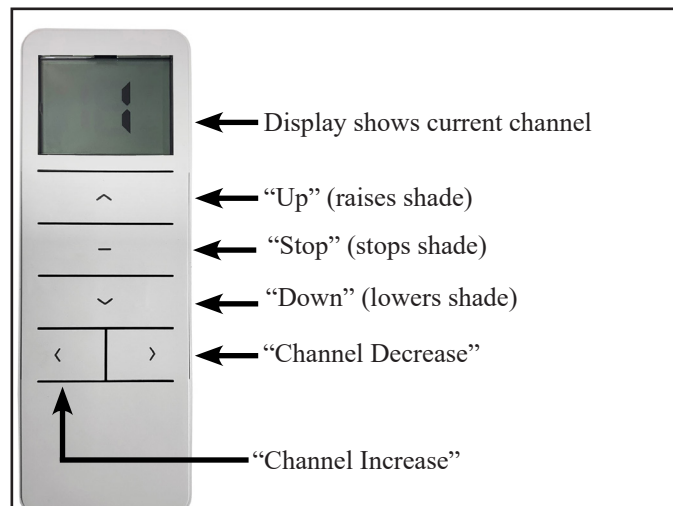


Fig M

Step 7: Set Your Upper and Lower Limits

When rolling your shade up or down, you can stop the fabric at any position by pushing the “stop” button on your Remote Control. Your shade is pre-programmed with a “Fabric Upper Limit” and a “Fabric Lower Limit”. These are the points where the fabric will stop rolling without you pushing the “stop” button. The default “Fabric Upper Limit” is approximately 4” below the valance. The default “Fabric Lower Limit” is approximately 96” below the Valance. If you are satisfied with these pre-programmed limits, you can skip to Step 8. If you would like to change your upper and lower limits, you will first need to delete the factory limits.

TO CHANGE LOWER LIMIT:

- Press and hold both the “down” button and the “stop” button for 5-6 seconds until the fabric jogs one (1) time and the motor beeps one (1) time (it will be a long beep)
- The pre-programmed lower limit should now be deleted, you can now set your own lower limit
- Push and hold the “down” button to get the shade to start lowering (note: if you just press the “down” button, the shade will only lower in small increments). You need to press and hold the “down” button. Once the fabric starts moving, you can release the “down” button
- Press the “stop” button one (1) time once you get to your desired lower limit (if you go too far, you can use the “up” or “down” button to get it to the exact lower limit you want).
- To finalize the programming, press and hold both the “down” button and the “stop” button for 3-4 seconds until the fabric jogs 2 times and the motor beeps 3 times. Your lower limit should now be programmed.

TO CHANGE UPPER LIMIT:

- Press and hold both the “up” button and the “stop” button for 5-6 seconds until the fabric jogs one (1) time and the motor beeps one (1) time (it will be a long beep)
- The pro-programmed upper limit should now be deleted, you can now set your own upper limit
- Push and hold the “up” button to get the shade to start raising (note: if you just press the “up” button, the shade will only raise in small increments). You need to press and hold the “up” button. Once it starts moving, you can release the “up” button.
- Press the “stop” button once you get to your desired upper limit (if you go too far, you can use the “up” or “down” button to get it to the exact lower limit you want).
- To finalize the programming, press and hold the “up” button and the “stop” button for about 3 seconds until the fabric jogs 2 times and the motor beeps 3 times. Your upper limit should now be programmed.

IMPORTANT- Do not allow your shade to go up into the valance. If it does, press “stop” immediately and lower your shade. Failure to press stop will cause damage to your motor, as the motor will continue to try to roll up until the “stop” button is pressed.

Step 8: Mount Remote Control to Wall (optional step)

Your shade includes a Remote Control Holder that allows you to mount your Remote Control to a wall/beam.

Important: if you mount your Remote Control, please make sure the remote is in a covered location. The Remote Control should not be exposed to rain, snow or direct sunlight.



Fig N



Fig O



Fig P

To install, place the Holder Bracket against the installation surface against the wall/beam and install it using the two Small Screws (Fig N).

Next, slide the Holder onto the Holder Bracket (Fig O). Now place the Remote Control onto the holder bracket (Fig P). There is a magnet on both the Holder and the Remote Control that keeps the remote in place.

Step 9: Install Cable Tie Down System (optional)

Your shade includes a Cable Tie Down System to keep your shade secured during mild wind conditions. If you will be using your shade indoors and do not plan to use the Cable System, you can skip this step. If you intend on installing the Cable Tie Down System, first determine if your application is suitable for the Cable System.

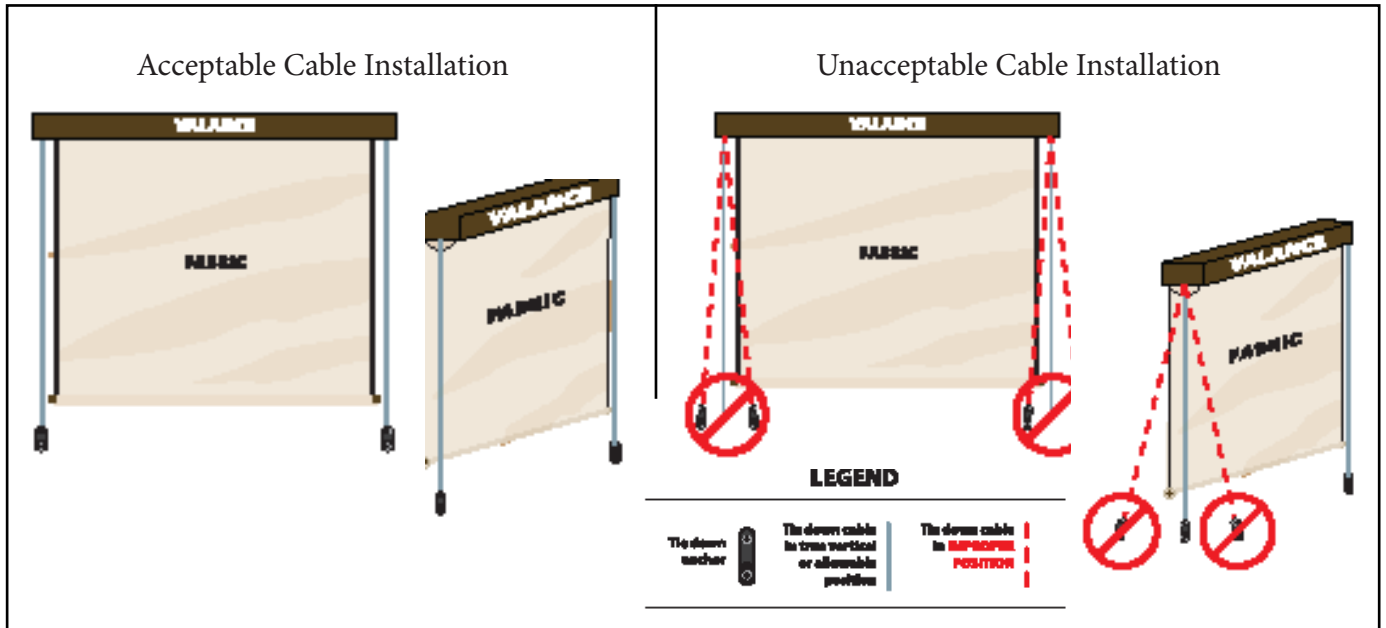


Fig Q

If you cannot anchor the bottom of your Cable directly underneath the point where the Cable enters the Valance (see Fig Q), then you will not be able to use the provided Cable system. Please see (Fig Q) for illustrations showing appropriate and inappropriate Cable installations. If you cannot use the Cable System, you will need to find another way to secure your shade during windy conditions. We offer a Bungee Tie Down System for purchase on our website that may better suit your application. Contact us for more information.

To install your Cable Tie Down System, start by screwing the Cable into your Valance (Fig R).



Fig R

Next, roll your Fabric down to your desired Lower Limit (if you haven't already programmed your Lower Limit, please refer to Step 7) and make a horizontal mark below both Bottom Tube Plugs (Fig S).

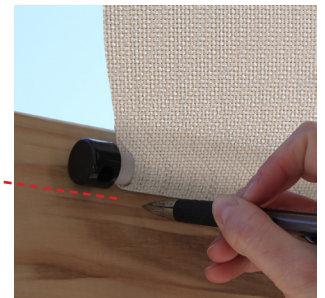


Fig S

Step 9: (continued)

Next, thread the Cable through the Bottom Tube Plug and make a vertical mark where the Cable intersects the horizontal mark (see Fig T). Note: you may need to roll the Fabric up to complete this part of the process.

Align the top of the Cable Bracket with the horizontal line and centered on the vertical line you created using the Cables (see Fig U) and install using the provided 1 inch Screws (two screws per Cable Bracket). Note: the Cable Bolt and Cable Bolt Nut will need to be removed before you can install the Cable Bracket.

Loosen the Bracket Lock Screw and thread the Cable through the Cable Bolt. Pull the Cable taut and tighten both the Cable Bolt Nut using a wrench (not included) and Hex Lock using the included Hex Key (Fig V). Cut any excess Cable slack underneath the Cable Bracket with wire cutters (not included) (Fig W).

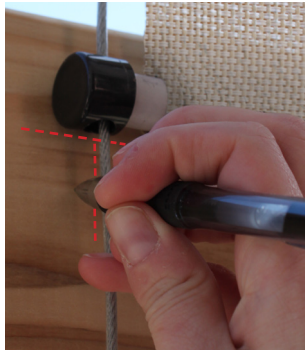


Fig T

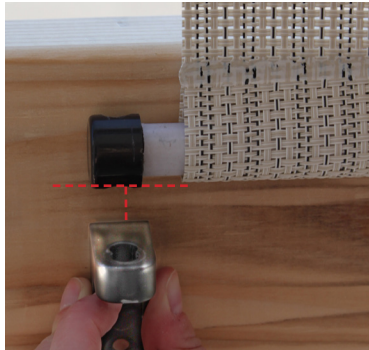


Fig U

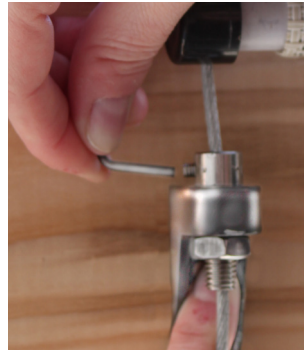


Fig V



Fig W

Other Remote and Shade Programming Procedures

PROGRAMMING ONE (1) REMOTE TO OPERATE MULTIPLE SHADES (optional)

If you have not already done so, remember to set the upper and lower fabric limits for each shade you purchased (with its original remote, see step seven (7)).

Your remote control has fifteen (15) usable channels. All shades are pre-programmed to operate on channel number one (1) of their original remote. If you purchased multiple shades, you have the option of controlling up to fifteen (15) shades with one (1) Remote Control. Note: to complete the following steps, you will need to remove the back cover from your remote control.

IMPORTANT: Before programming additional shades to a remote, we recommend labeling all remotes so you will be able to identify which shade they originally were paired with. For example: Shade #1 is paired with Remote #1, Shade #2 is paired with Remote #2, etc.

To explain the process of programming a remote to operate multiple shades, we are going to use an example. For this example, let us assume that you want Remote #1 to operate Shade #1 on channel #1 and Shade #2 on channel #2.

Because each remote is pre-programmed to its own shade, you simply need to send a signal from Remote #2 to Remote #1.

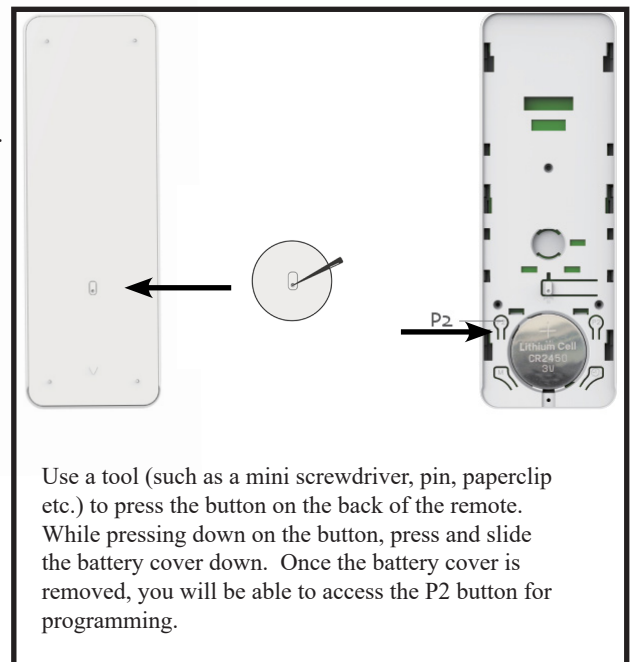
Using Remote #2

1. Press P2 button (wait for jog and beep)
2. Press P2 button again (wait for jog and beep)

Using Remote #1

1. Push channel up until you have channel #2 selected
2. Press P2 button (wait for jog and beep)

Remote #1 should now control Shade #1 while channel #1 is selected and Shade #2 while channel #2 is selected. Once all shades have been programmed to the same remote, you can use the channel increase/decrease button to move between channels. Note: channel #0 will operate all fifteen (15) channels.



DELETING A SHADE FROM A REMOTE

To explain the process of deleting a shade from a remote, we are going to use an example. For this example, let us assume that Remote #1 currently operates Shade #1 on channel #1 and Shade #2 on channel #2. Let us also assume that you no longer want the remote to operate Shade #2.

Using Remote 2

1. Press P2 button (wait for jog and beep)
2. Press P2 button again (wait for jog and beep)

Using Remote 1

1. Using the channel select buttons, select channel #2
2. Press P2 button (wait for jog and beep)

ERASING ALL FREQUENCIES ON THE REMOTE AND SHADE (and re-establish a connection)

If your remote and/or shade are not working properly, you can reset the remote and shade. This process will clear the frequency of the shade and selected channel on the remote. It will also erase any upper and lower fabric limits you may have set.

Step A: Delete shade/remote connection and fabric limits

Press and hold clear button on motor for about 14-16 seconds until the motor jogs 4 times and beeps 4 times (Fig X).

Your motor and remote have now been reset.

Step B: Re-establish shade/remote connection

Now you will need to re-pair your remote to the shade

1. Press the "clear" button on motor (Fig X) until shade jogs 1 time and beeps 1 long beep
2. Press the stop button on the remote (within 10 seconds of pushing the clear button on the motor) for about 2 seconds until the motor jogs 2 times and beeps 3 times.

Your remote is now paired to your shade.

Once your remote is paired, you need to program your upper and lower limits (set the lower limit first, followed by the upper limit) as described in step 7 above.

IMPORTANT: You should not operate your shade without upper and lower limits being set.



Fig X

Troubleshooting

Problem	Possible Reasons	Solution	Process
Remote does not work	Remote control battery is dead or has not been installed	Install battery or replace battery (1 battery included in package)	see installation instructions (step 6)
	Remote frequency has been deleted	Re-program Remote	See “programming help” follow instructions: erasing all frequencies (pg 7)
	Shade needs to be charged	Charge Shade	Use included AC adapter and plug in shade
	Remote battery not installed correctly	Install battery correctly	Remove battery, and reinstall with correct polarity
	Remote is not on correct channel	Place remote on correct channel	Use the channel increase/ channel decrease buttons to get shade on correct channel (usually channel 1)
Top and bottom fabric limits did not save correctly	Remote signals not successfully received by motor	Set Upper and Lower Limits again	See Step 7 for instructions

Maintenance

To clean your shade fabric, simply rinse with water and soap and scrub with a soft brush. Remember to unplug your shade before cleaning. Do not allow the motor to get wet. Note: using bleach or an abrasive cleaner will void your warranty. Roll the shade down to air dry. Your shade should be rolled up during high wind conditions.

Additional information

An instructional video is available on our website (www.koolspot.net) if you need additional help installing or programming your shade.

Don't forget to register your shade at www.koolspot.net